

U2-Diesel Specifications

Display	3.5" Color LCD with LED backlight
Input Device	Pocket-sized IR remote keypad
Print Technology	Thermal Inkjet
LED Indicators	Alarm, Ink low, Print, Run, Remote on/off
Available Languages	English, Chinese (Traditional), Chinese (Simplified), Japanese, Russian, Korean, German, Portuguese, Spanish, French, Italian, Turkish, Hungarian, Slovak, Czech, Swedish, Romanian, Serbian Latin, Serbian Cyrillic, Bulgarian, Polish, Vietnam
Sensor	Internal photocell
Encoder	External
Mounting Orientation	Horizontal or downside
Max. Printing Resolution	400(h) x 600(v) dpi Print quality is dependent on resolution and speed
Max. printing Speed	60.96 Meters/Mins at 300 dpi setting
Max. Printing Distance	Recommended 6mm from nozzle to surface
Message Height	"Up to 12.7mm (0.5") Selectable font size: 1.0mm, 1.4mm, 1.8mm, 2.7mm, 3.6mm, 4.5mm, 5.0mm, 5.5mm, 6.4mm, 8mm, 10mm, 11mm, 12.7mm"
Print Capabilities	Alphanumeric, logos, date/time, shift code, counter,lot box code
Barcodes	Code-128, ITF-14(SCC-14),NVE(SSCC-18), EAN-128, PDF417, Data Matrix,QR Code, DUN-14, GS1 Datamatrix, GS1 DataBar, GS1 DataBar EXP, GS1 QR CODE, UPCA, UPCE, EAN-13, EAN-14, EAN-8, Codabar, Aztec Code, INTER25, CODEBAR, Code-39
Message Storage Capacity	Store up to 999 messages
Input/Output	RS-485, RS-232, USB, Wi-Fi & Ethernet
Power Adapter	AC 100V~240V, 50/60Hz
Operating Temperature	5°C – 40°C (41°F – 104°F)
Dimensions (L/W/H)	114 (L) x 76 (W) x 60 (H) (mm)
Weight	0.49kgs (1.08 lbs.) - excluding cartridge and bracket
Standard Accessories	Bracket set, power adapter, USB disk, remote control
Optional Accessories	300 dpi & 400 dpi Encoder kit, Photocell kit, Wi-Fi dongle, Ethernet dongle, RS-485 to USB converter, Smart I/O kit, Clock stabilizer
PC software	Message Pro II, Net Commander
Printer Control Protocol	ANSER U2 Net Protocol





The integration of quality, efficiency, and cost saving.
Introducing the latest revolutionary printer, the U2-Diesel.

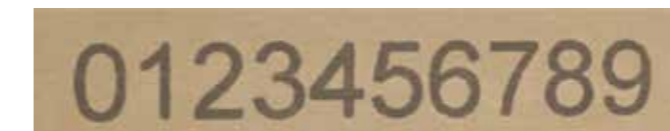
Comparison Items	U2-Diesel Ink Jet Printer	LCP Large Character Printer
1. Lower printer cost	✓	-
2. Higher print resolution	✓	-
3. Higher print speed	✓	-
4. No ink leakage	✓	-
5. No-maintenance	✓	-
6. No consumable parts	✓	-
7. No technician required	✓	-
8. Lower price-per-print	✓	-
9. Lower total cost of ownership	✓	-

U2TM
DIESEL

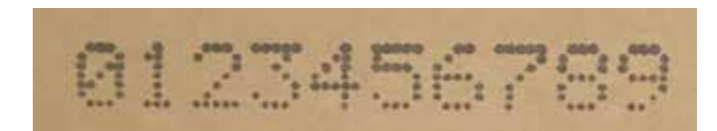


Print more, Save more !

- Equivalent Print to 5-Gallon Ink Barrel
- Exclusive Ink Formulation
- Cost-effective 420 Bulk Ink Solution



Printed by U2-Diesel



Printed by Large Character Printer